

# BUILDING COMMUNITY: INNOVATION IN COMMUNITY INFRASTRUCTURE IN ARVIAT, NUNAVUT

**Keith Collier**

Director of Community Development  
Hamlet of Arviat

Kivalliq Trade Show  
September 28, 2016



# Overview

## ▣ The Hamlet of Arviat

- Community, Demographics, Infrastructure Needs

## ▣ Infrastructure Developments

- New Hamlet Office
- Sports Park
- Public Works
  - ▣ Gravel Crusher Program
  - ▣ Water Supply
- Community Freezer

## ▣ How? – Partnerships, funding, communication, internal capacity

## ▣ What's next?

- Eco-Park, Territorial Park
- Energy Projects
- Transportation

# Arviat

- ▣ Nunavut's Kivalliq Region, Western Hudson Bay
- ▣ Settled in the 1940s & '50s, previously a trading post
- ▣ Large, young, rapidly growing population
- ▣ Mix/balance of traditional & wage economy
- ▣ Quiet but connected to Churchill and Rankin Inlet
- ▣ Important for stakeholders to understand the communities





# Arviat Demographics & Infrastructure Needs

- ▣ Second largest community in Nunavut (~3,000 people).
- ▣ Currently high demand for employment, housing, services, etc.
- ▣ Population is very young and growing very fast. Demand for jobs, housing, & infrastructure is going to grow exponentially.
- ▣ Needs
- ▣ Infrastructure





# Infrastructure Developments

- ▣ Hamlet Office
- ▣ Sports Park

- ▣ Public Works
- ▣ Community Freezer



# New Hamlet Office

- ▣ Consolidating office space.
- ▣ One stop for Hamlet services.
- ▣ Better internal communications





# Public Works

Keeping pace with growing population  
- Gravel Crusher



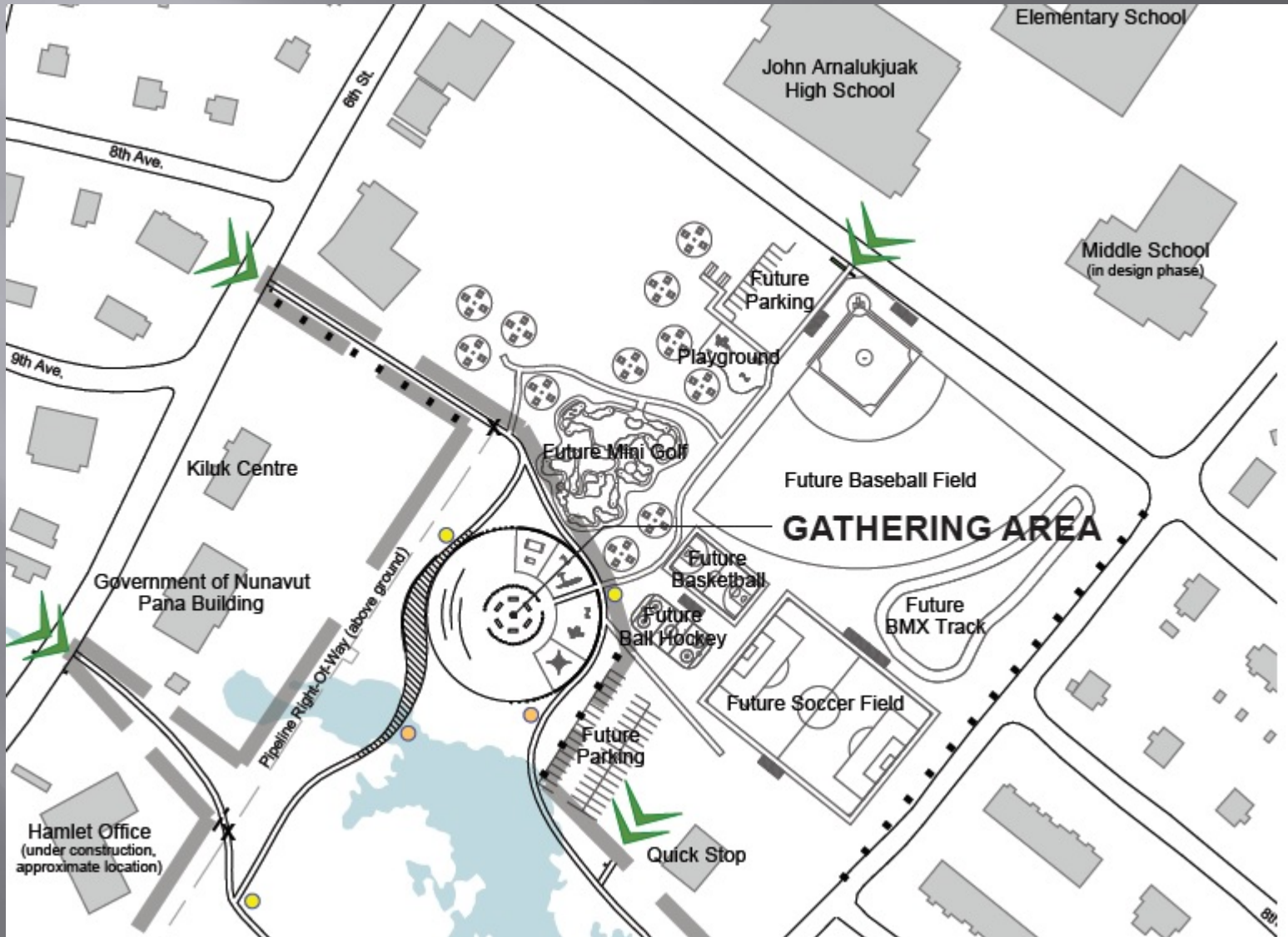
# Public Works

Keeping pace with growing population  
- Water Supply





# Sports Park



# Sports Park





# Sports Park



# Sports Park





# Sports Park



# Sports Park – Portable Office

- Secure
- Portable
- Can be solar powered



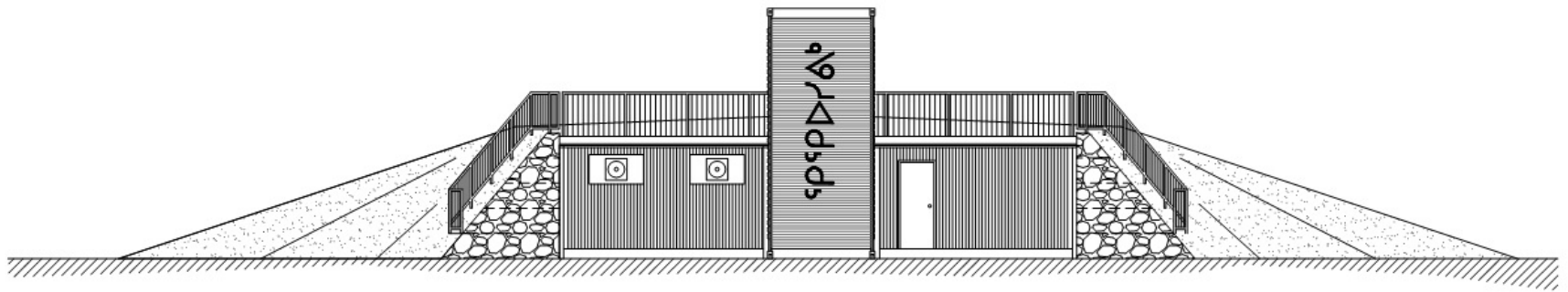


# Community Freezer

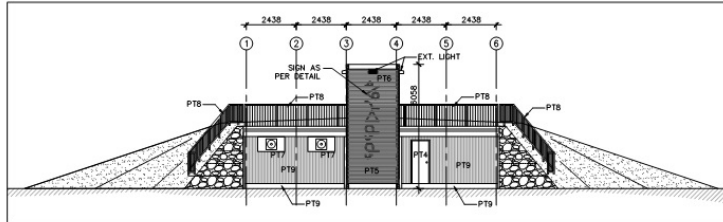
Old Community Freezer was undersized.  
Through RFP process, contracted Stantec to design new  
freezer.

## ARVIAT COMMUNITY FREEZER

ARVIAT, NUNAVUT



# Community Freezer Elevations

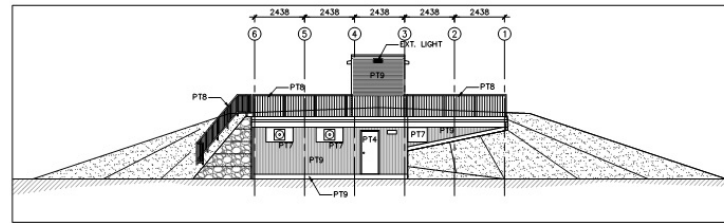


**COLOR SCHEDULE:**

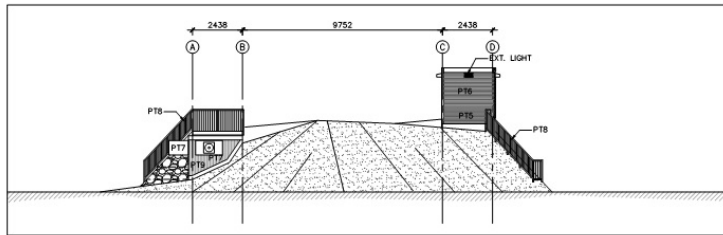
**LETTERS**

- PT1: GENERAL PAINT "OVERLOAD CLV 1114N" (RED)
- PT2: G.P. "QUINN CLV 1119N" (YELLOW)
- PT3: G.P. "DUM CLV 1135N" (GREEN)
- PT4: G.P. "A-LEST CLV 1165A" (BLUE)
- PT5: G.P. "BLIZZARD CLC 1203A" (DARK GRAY)
- PT6: G.P. "RENOVATION CLC 1202W" (LIGHT GRAY)
- PT7: FACTORY FINISH
- PT8: GALVANIZED
- PT9: CORRUGATED GALVALUME

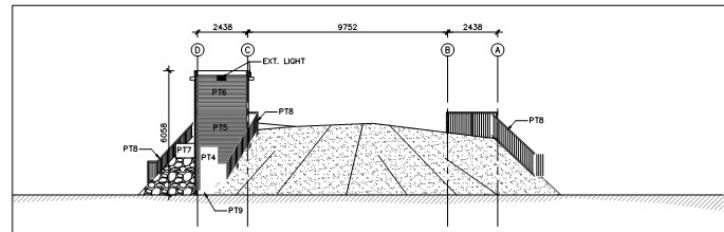
1 FRONT ELEVATION  
A201 1:100



2 REAR ELEVATION  
A201 1:100



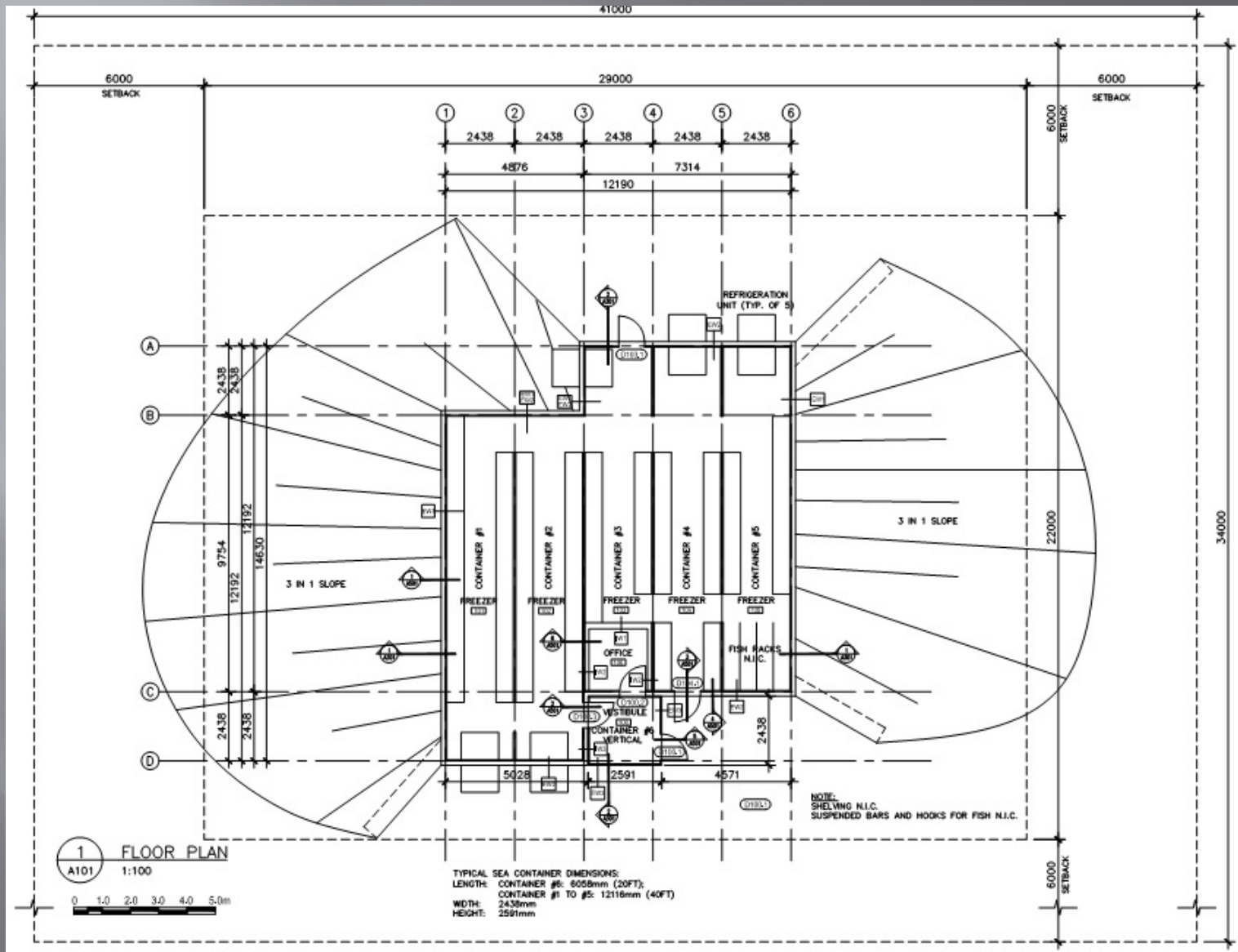
3 SIDE ELEVATION  
A201 1:100



4 SIDE ELEVATION  
A201 1:100



# Community Freezer Layout



# Community Freezer

Installation of Sea Can Structure and Insulation





# Community Freezer

Beginning Gravel & Gabion Work



# Community Freezer

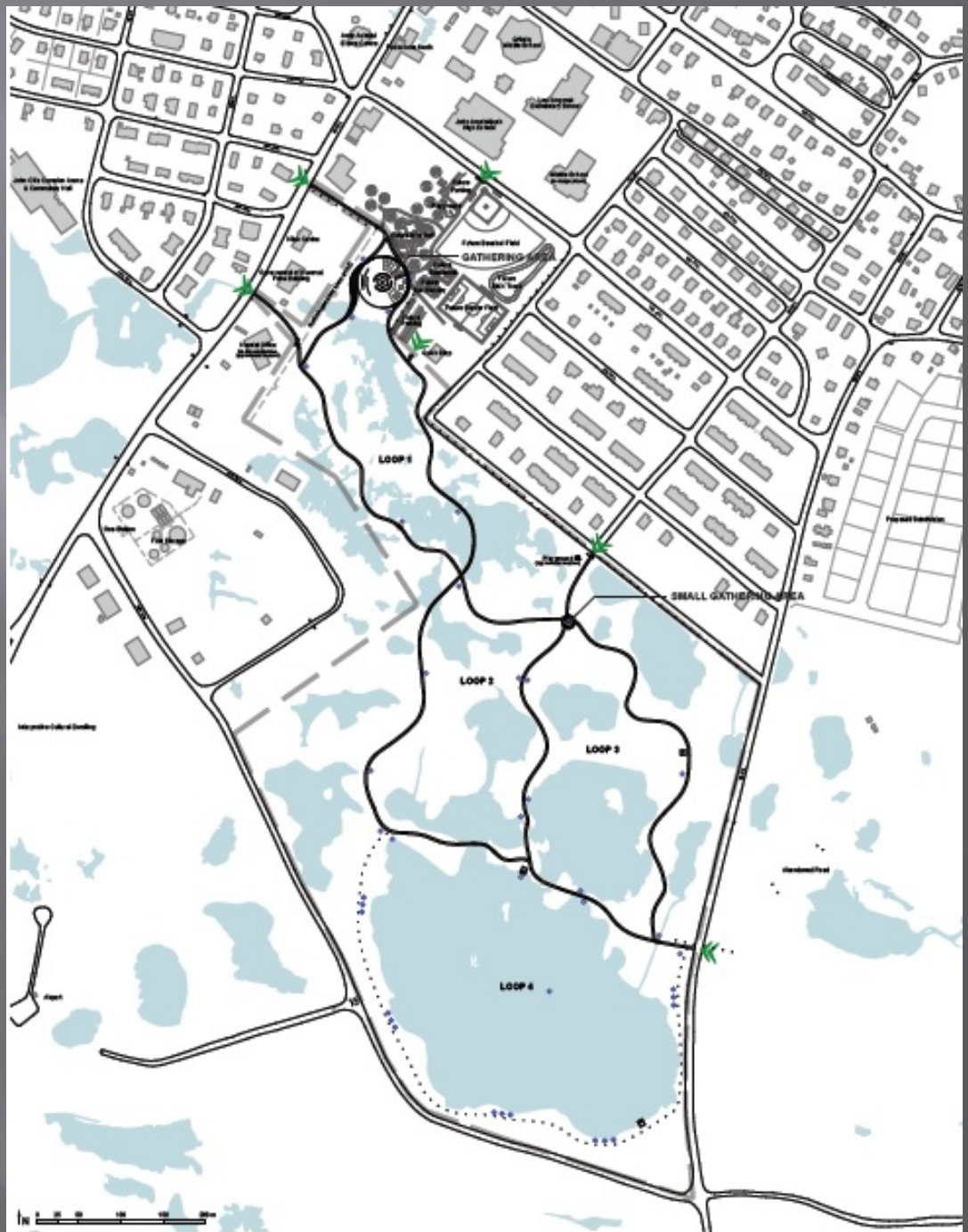
Gravel & Gabion Work





# What's Next?

- ▣ Eco-Park & Territorial Park
- ▣ Tourism
- ▣ Energy
- ▣ Transportation



# How to Innovate & Build?

- ▣ Communication & Partnerships
- ▣ Funding & Finances.
- ▣ Internal Capacity - you have to invest in your people.
- ▣ Work with other organizations – they want to help!





# Opportunities

- ▣ Design & Build
- ▣ Supply
- ▣ Technology
- ▣ Anticipate and meet community needs.



# Thank You – Questions?

**Keith Collier**

Director of  
Community  
Development

Hamlet of Arviat

(867) 857-2841  
[arviatdcd@gmail.com](mailto:arviatdcd@gmail.com)

