

CUTTING THE RIBBONS: INFRASTRUCTURE & WORKFORCE DEVELOPMENT IN ARVIAT, NUNAVUT

Keith Collier

Director of Community Development
Hamlet of Arviat

Kivalliq Trade Show
September 30, 2015



Overview

- ▣ The Hamlet of Arviat
 - Community
 - Demographics
- ▣ Infrastructure Developments
 - New Hamlet Office
 - Sports Park, Eco-Park, and Territorial Park
 - Public Works
 - ▣ Gravel Crusher Program
 - ▣ Water Supply
- ▣ Partnerships for Growth

Arviat

- ▣ Nunavut's Kivalliq Region, Western Hudson Bay
- ▣ Settled in the 1940s & '50s, previously a trading post
- ▣ Large, young, rapidly growing population
- ▣ Mix/balance of traditional & wage economy
- ▣ Quiet but connected to Churchill and Rankin Inlet
- ▣ Important for stakeholders to understand the communities



Arviat Demographics

- ❑ Second largest community in Nunavut (~3,000 people).
- ❑ Currently high demand for employment, housing, services, etc.
- ❑ Population is very young and growing very fast. Demand for jobs, housing, & infrastructure is going to grow exponentially.
- ❑ Nearly 10% of Nunavut lives in Arviat.



New Hamlet Office

- ❑ Consolidating office space.
- ❑ One stop for Hamlet services.
- ❑ Better internal communications



Sports Park



Sports Park



Sports Park



Sports Park



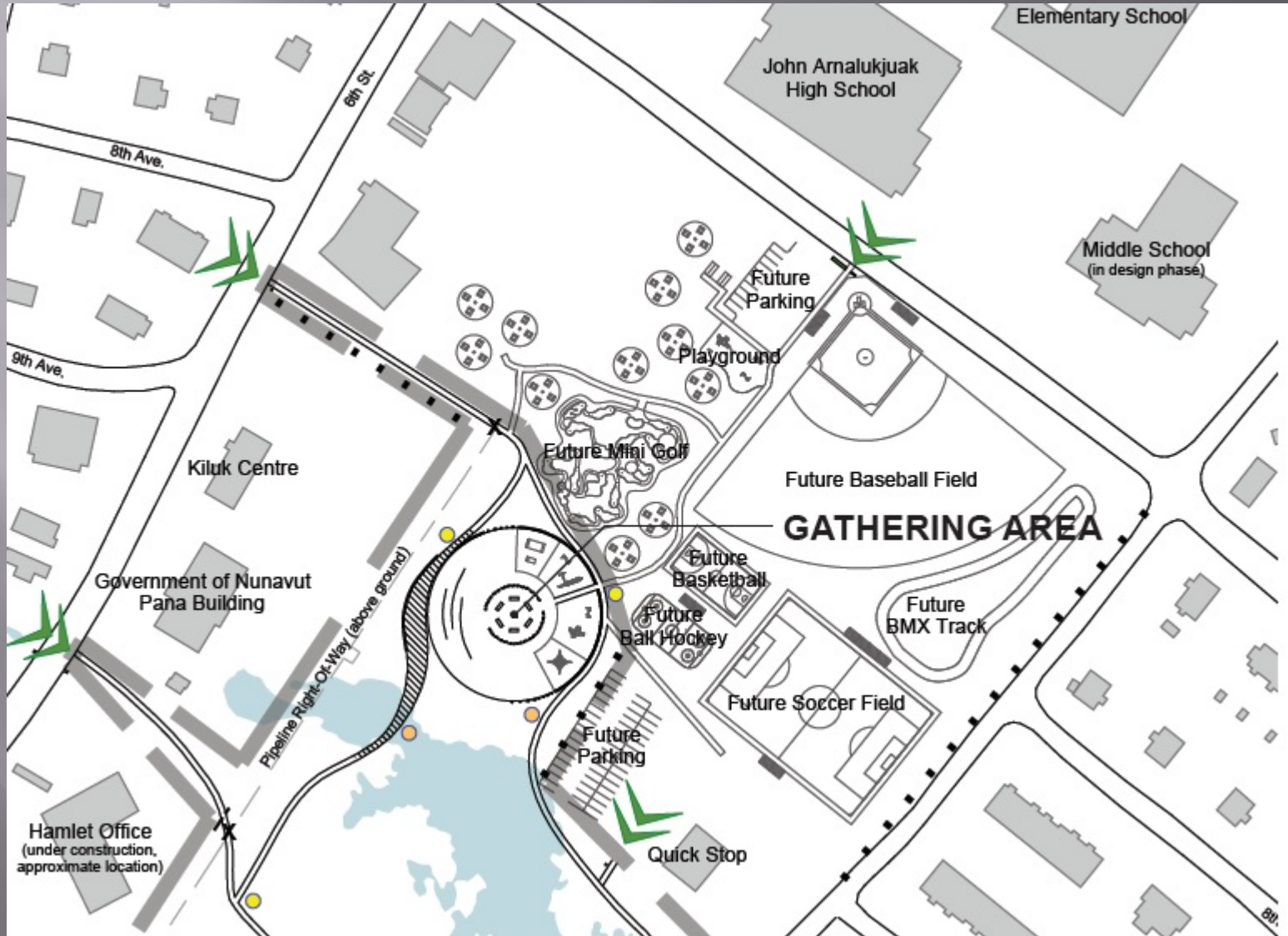
Sports Park



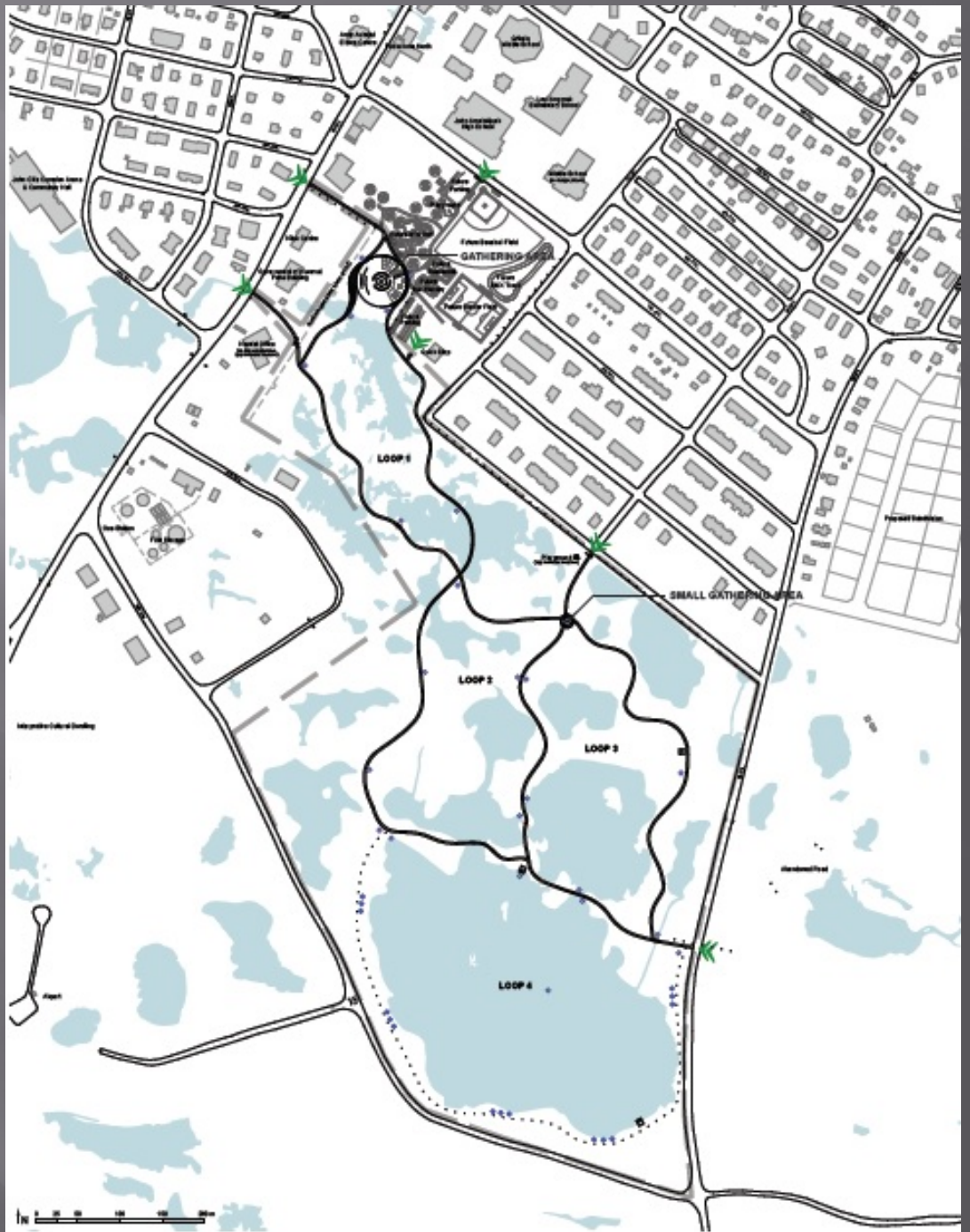
Sports Park



Sports Park

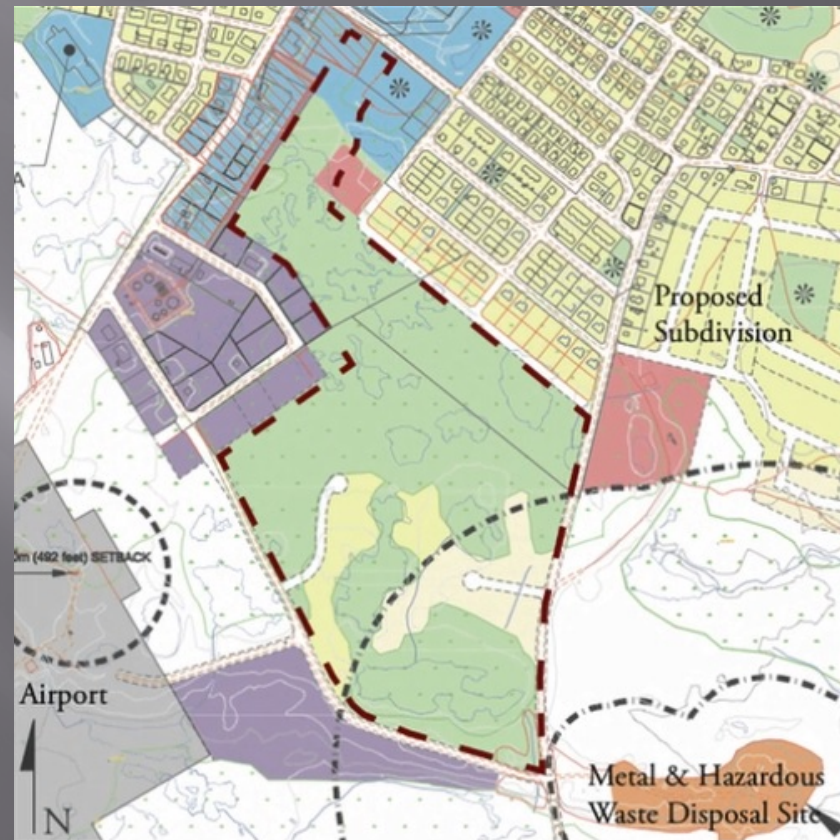


Arviat Eco-Park



Creating Space

Redefining the centre of the community from “empty” space to “community space” and focal point.



Map excerpt from Arviat Community Plan & Zoning By-law, 2010.



Parks & Recreation Planning

- ▣ Combined planning/connecting spaces
 - Nuvuk Territorial Park
- ▣ Looking forward to community needs.
- ▣ Including Recreation Facilities



Public Works

Keeping pace with growing population

- Gravel Crusher
- Water Supply



Partnerships for Growth

- ▣ A period of investment in infrastructure is needed to keep pace with the growing population.
- ▣ It takes partnerships, leadership, and planning.
- ▣ In the end, it's about people.



Thank You - Questions?

Keith Collier

Director of
Community
Development

Hamlet of Arviat

(867) 857-2841
arviatdcd@gmail.com

