

TSX.V
PPG



PROSPERITY
GOLDFIELDS

Creating Wealth Through Discovery



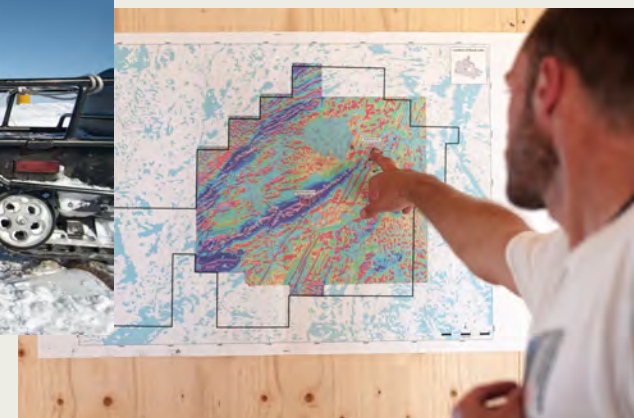
GOLD EXPLORATION IN NORTHERN CANADA
November 20th, 2012

➤ DISCLAIMER

This presentation does not constitute or form part of any offer for sale or solicitation of any offer to buy or subscribe for any securities in Prosperity Goldfields Corp., nor shall it or any part of it form the basis of or be relied on in connection with or act as any inducement to enter into any contract or commitment whatsoever. No reliance may be placed for any purpose whatsoever on the information or opinions contained in this presentation or on any other document or oral statement or on the completeness accuracy or fairness of any such information and/or opinions. No undertaking, representation, warranty or other assurance express or implied is made or given by or on behalf of Prosperity Goldfields Corp. or any of their directors, employees or advisors, as to the accuracy or completeness of the information or opinions contained in this presentation and, save in the case of fraud, no responsibility or liability is accepted by any of them for any such information or opinions or for any errors, omissions, misstatements, negligence or otherwise contained or referred to in this presentation. The contents of this presentation have not been approved by an authorized person.

➤ OVERVIEW

- The best new gold discovery in Nunavut.
- Spring drilling confirmed higher grades at Rusty plus new discovery at Amundsen.
- Summer Exploration found new gold showings.
- Aggressive two drill program in 2013.



> PEOPLE



- Adrian Fleming, President & Director, is an Australian geologist with 35 years diversified experience in the mining industry. Exploration continues to be his passion. He has been a member of the teams that made gold discoveries at Porgera, PNG; Big Bell, W.A.; Gross Rosebel, Suriname; Hope Bay, Nunavut and most recently White Gold, Yukon, Canada with Underworld Resources.



- Darryl Cardey, Chairman, is a partner with CDM Capital, a private company focused on merger, acquisitions and corporate finance. He was a co-founder and director of Underworld Resources.



- Quinton Hennigh, Director & Technical Advisor, is an economic geologist with more than 20 years experience. Over the past five years he has driven successful exploration programs and made significant discoveries for Evolving Gold, Gold Canyon Resources and Prosperity Goldfields.



- Steve Swaffield, Director, is the principal of CarbEx Consulting Inc. He has over 25 years of experience in senior financial advisory and operational roles and as an investment banker. He holds a BA and MA in Engineering Science and an MBA.



- Darren Devine, Corporate Advisor, is a partner with CDM Capital, a private company focused on merger, acquisition and corporate finance. He is a founder, director, officer and/or advisor to a number of private and public companies in the oil, gas and mineral resource sectors.

> CAPITAL STRUCTURE

DESCRIPTION	NUMBER	EXERCISE	EXPIRY
Shares Outstanding	75,317,692		
Options	5,503,487	\$0.50-\$1.60	Jul – Sep '16
Warrants	24,093,052	\$0.25-\$1.92	Nov '12 – Feb '15
TOTAL	104,968,231		
CASH ON HAND \$4.2 MILLION			

Ownership:

Directors / Management own 7%

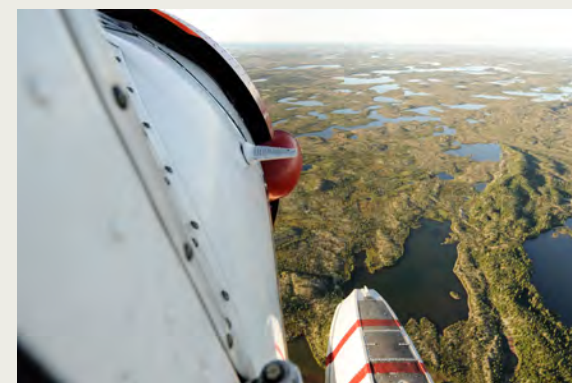
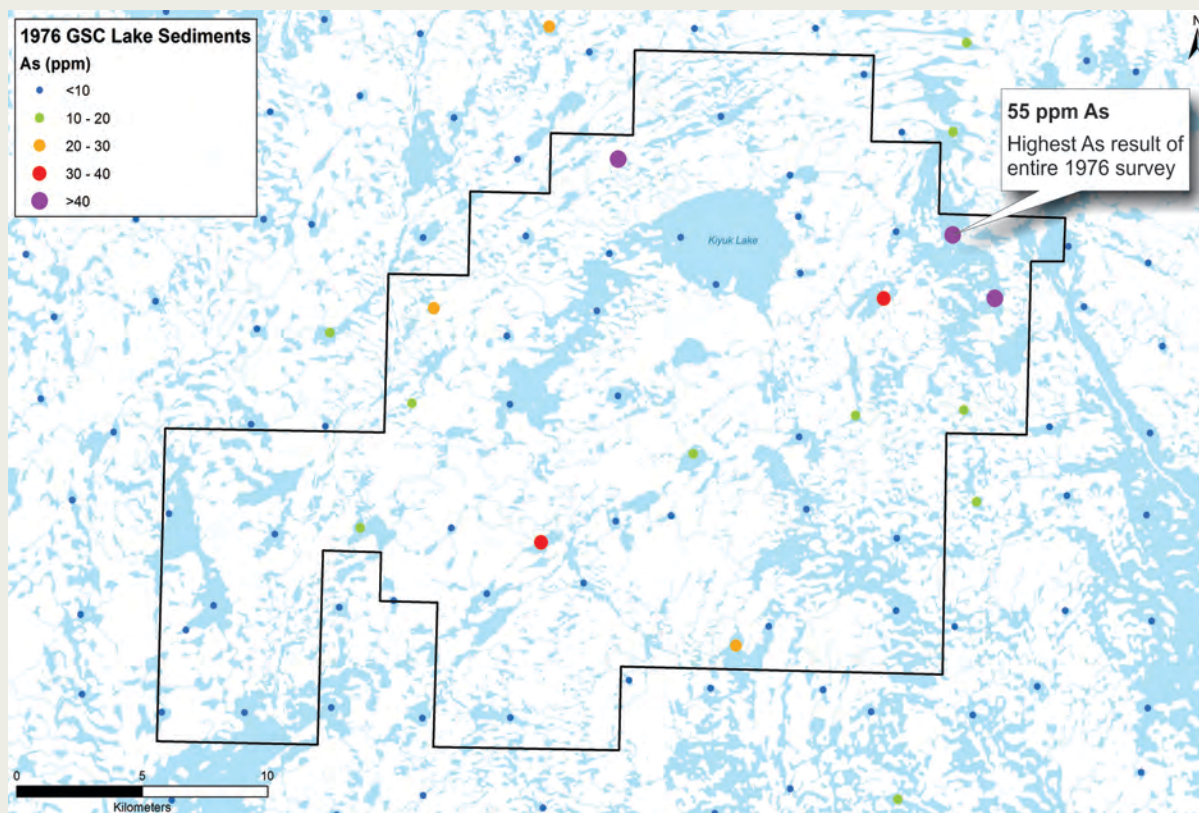
Major Shareholders & funds own 50% including:

Richmond Capital	Evolving Gold
Pinetree Capital	Sprott Asset Management
Novo Resources	

> LOCATION



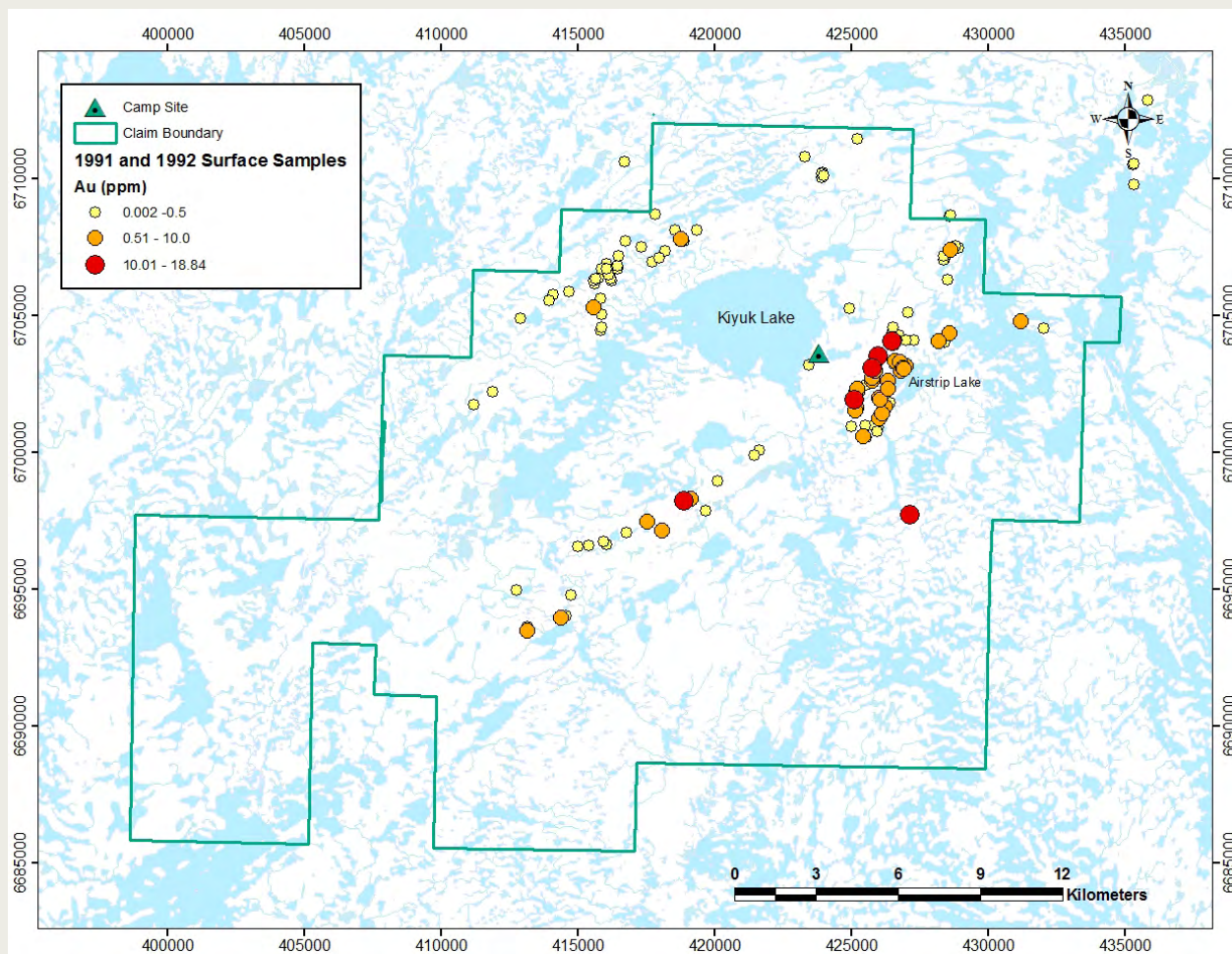
➤ EARLY SIGNS



Landforms in project area, southern Nunavut, produced from last ice age 20,000 years ago.

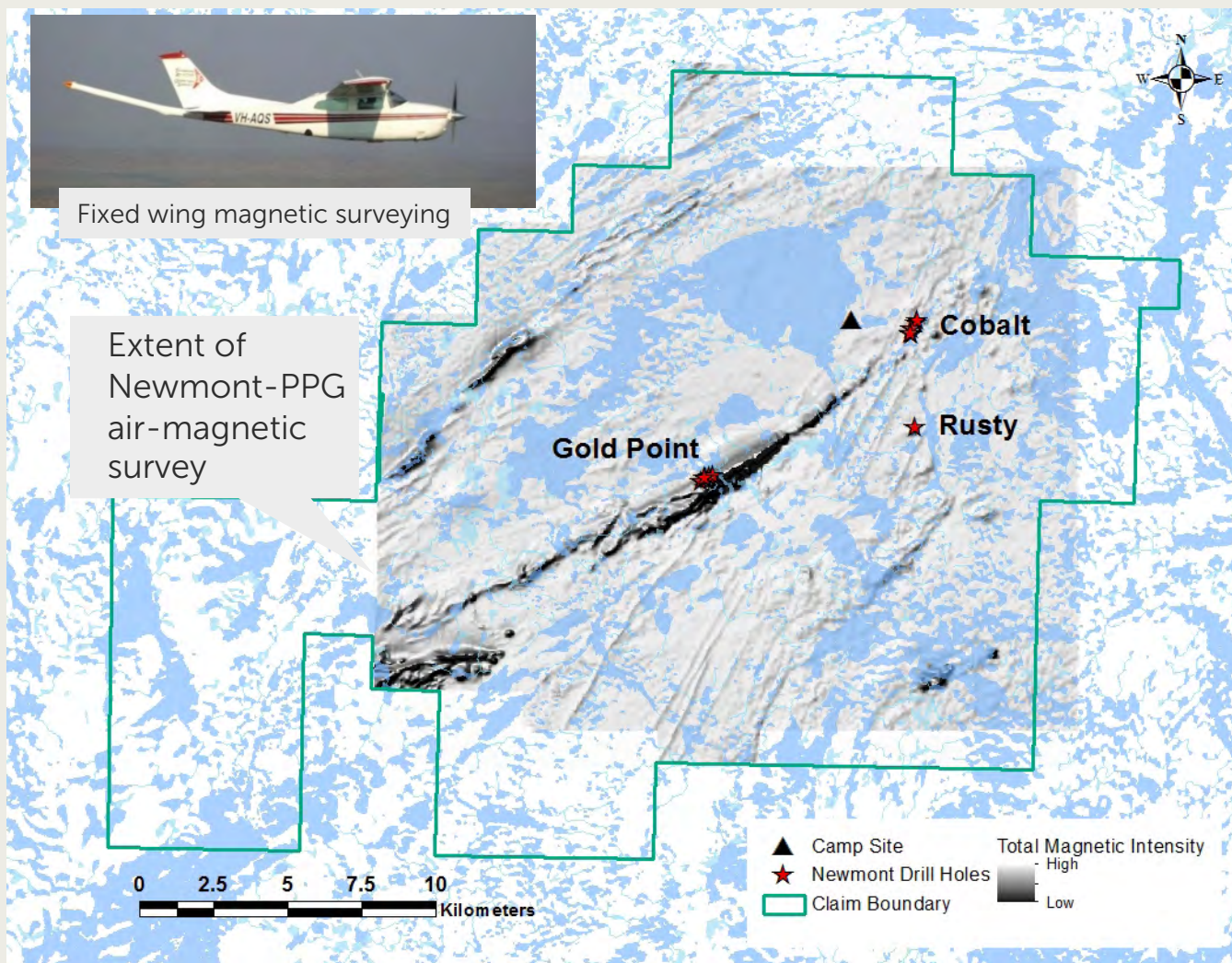
- Lake Sediment geochemistry in 1976 by GSC, 1,140 samples.
- The highest As values were near Kiyuk Lake.

➤ FIRST PROSPECTORS



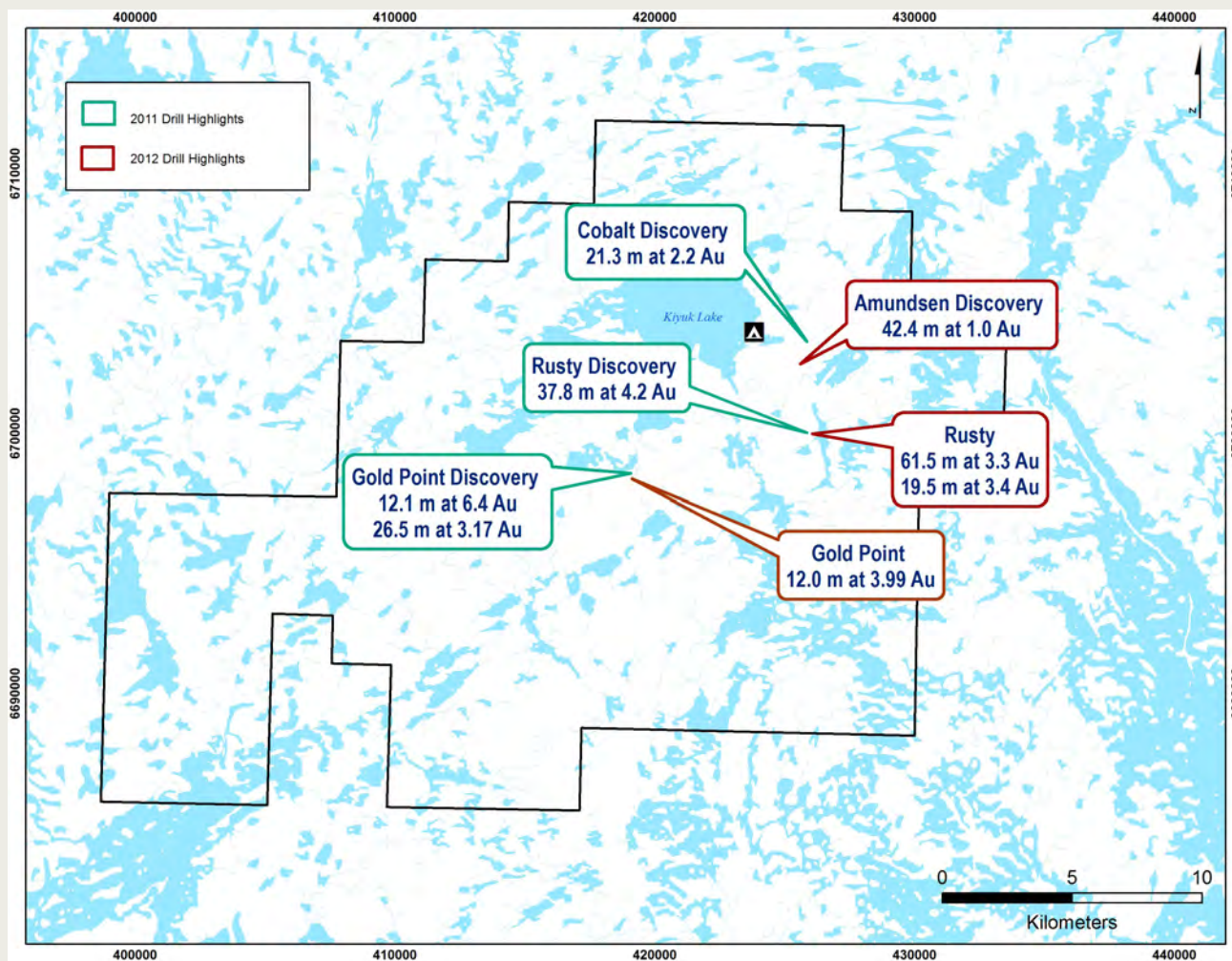
First sampling campaign in 1991 and 1992 found up to 37.0 g/t in rock sample

➤ INITIAL EXPLORATION



Newmont completed airborne magnetics, drilling and prospecting in the mid 2000's

➤ DRILLING HIGHLIGHTS; 2011, 2012



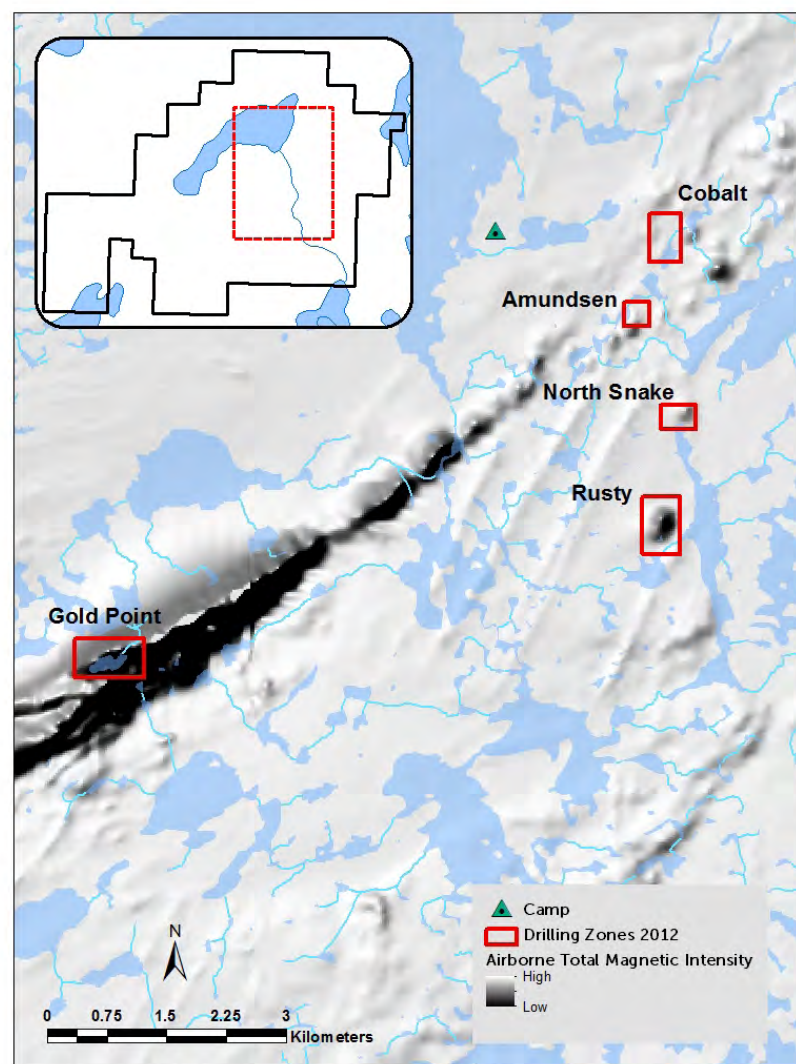
- 2011 drilling: 14 holes, 2,700m, discovered strong gold intersections at **three** separate locations.

➤ SPRING 2012 DRILL PROGRAM

- 12 holes completed totaling 2,652 m.
- Tested three known zones and two new targets.
- Rusty zone 61.5m at 3.3 g/t Au.
- New Discovery, Amundsen; 42.4 m at 1 g/t Au.

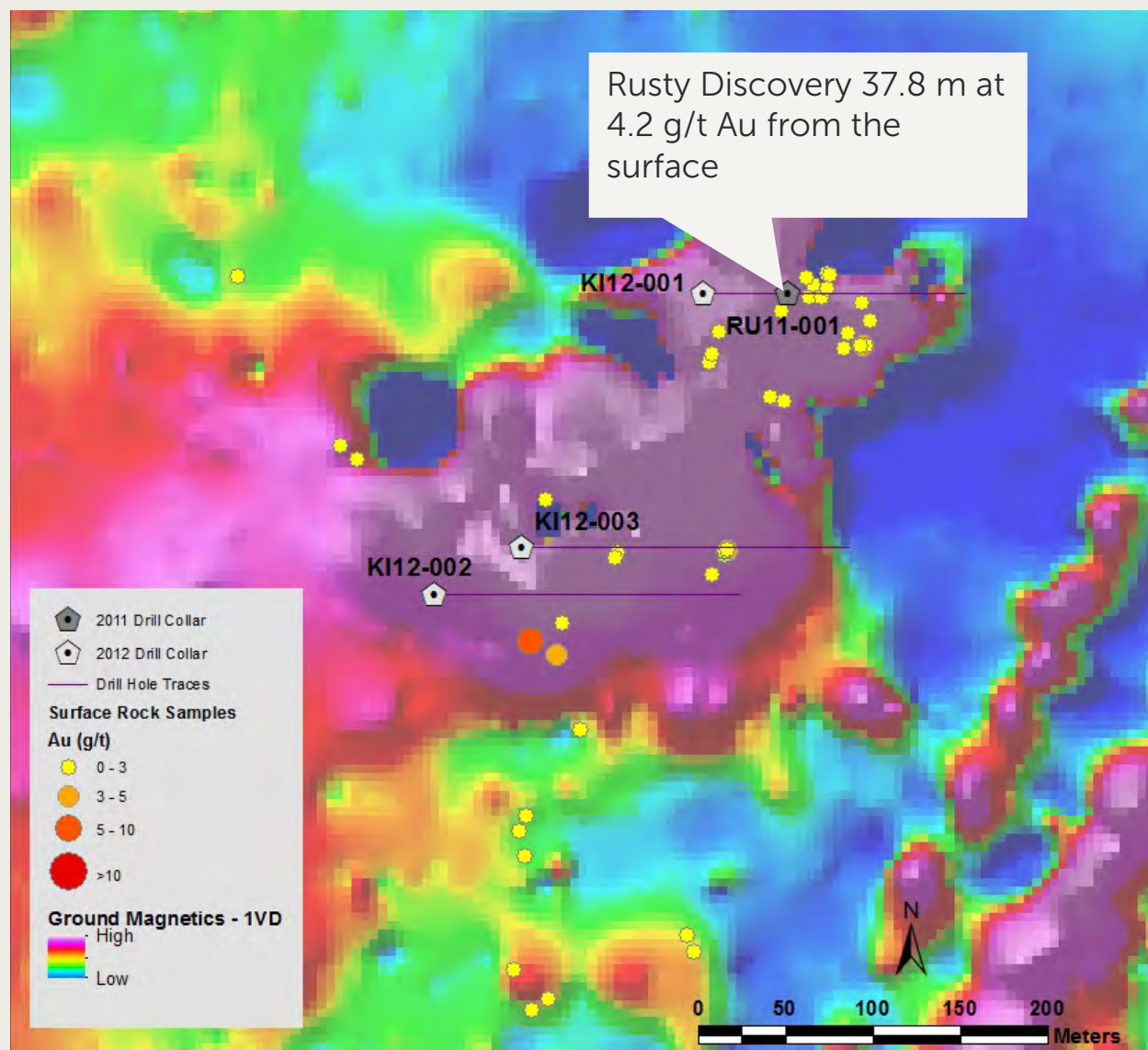


Drilling at Rusty

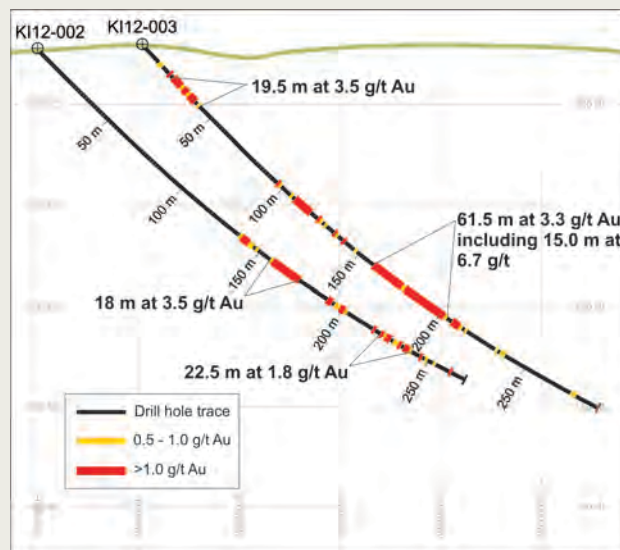
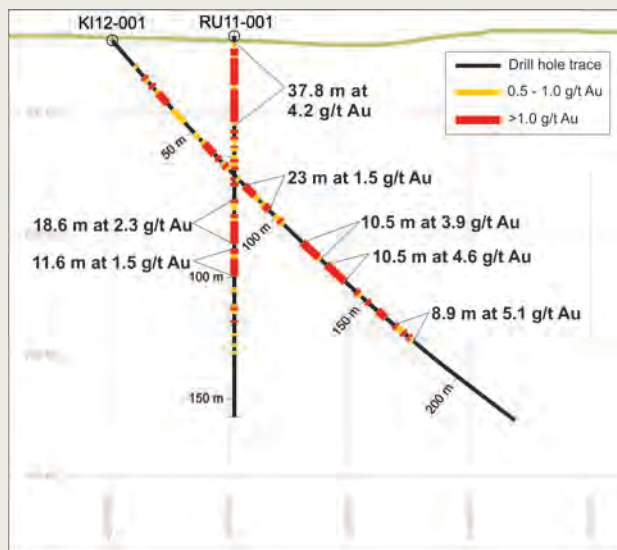


➤ RUSTY ZONE DRILLING

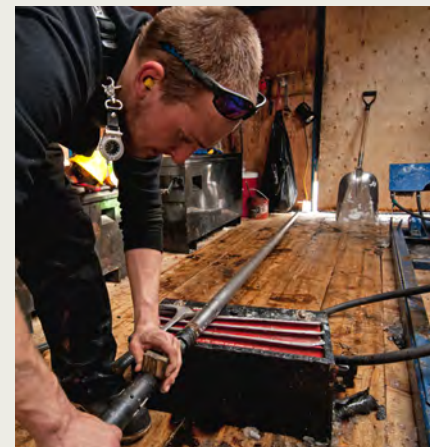
- Three holes at Rusty to test mineralization seen at the surface.
- Objective to define the potential of this 2011 discovery.



➤ RUSTY ZONE 2012 DRILLING



- Mineralized zone at least 100 m wide.
- Strike length of at least 250 m.
- Rusty Zone is open to the north, south and at depth.

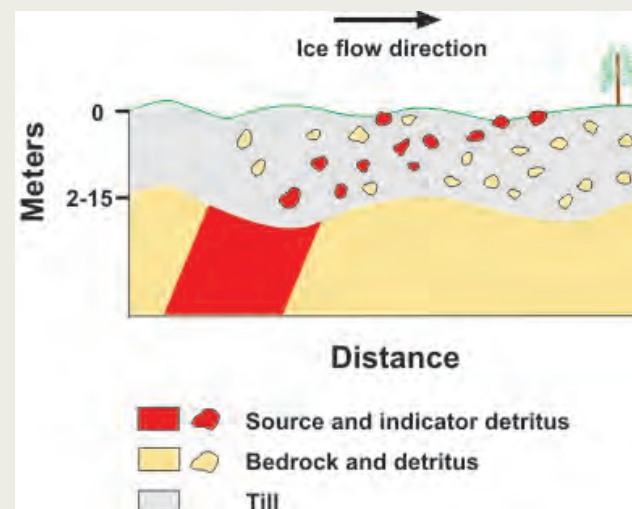


Typical mineralized breccia

➤ KIYUK EXPLORATION

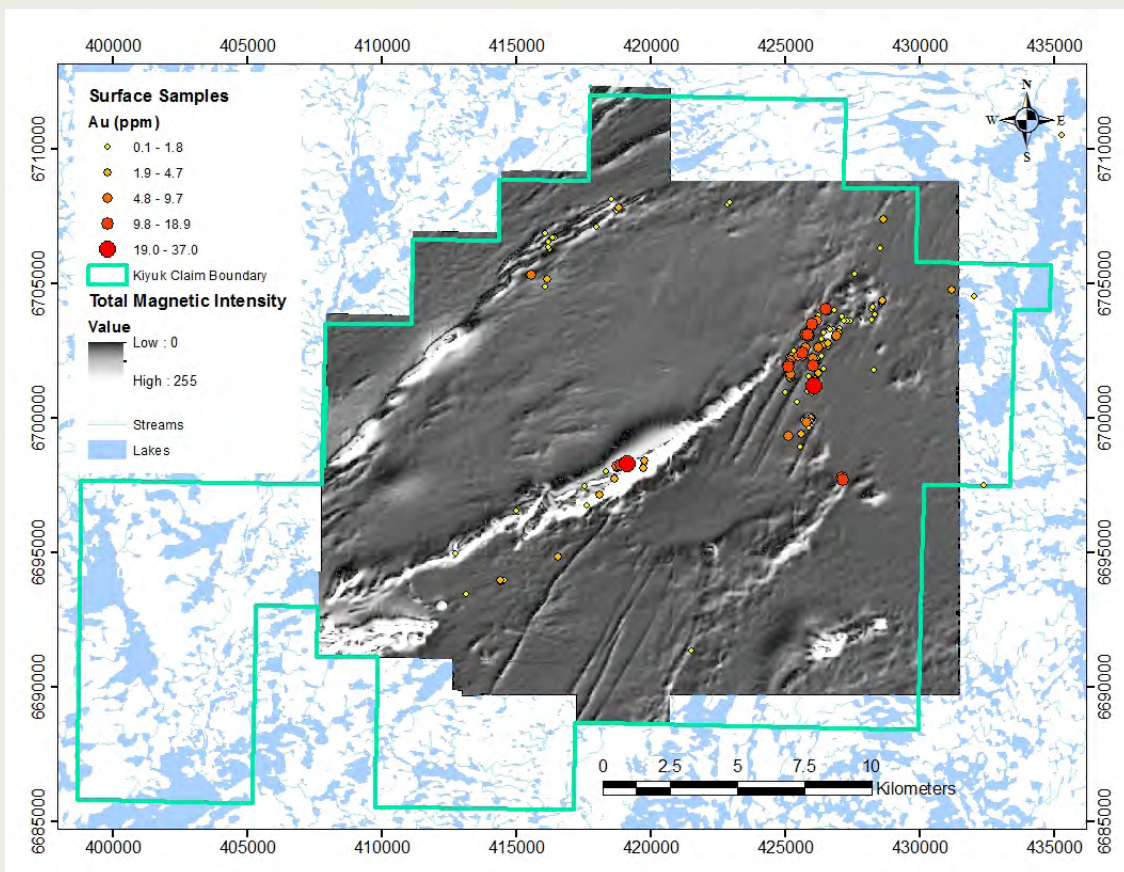


Canada blanketed by an ice sheet 20,000 years ago.



- All of the prospects identified to date are from boulders left behind by the last ice sheet.
- There may well be other gold showings not yet discovered.

➤ KIYUK EXPLORATION



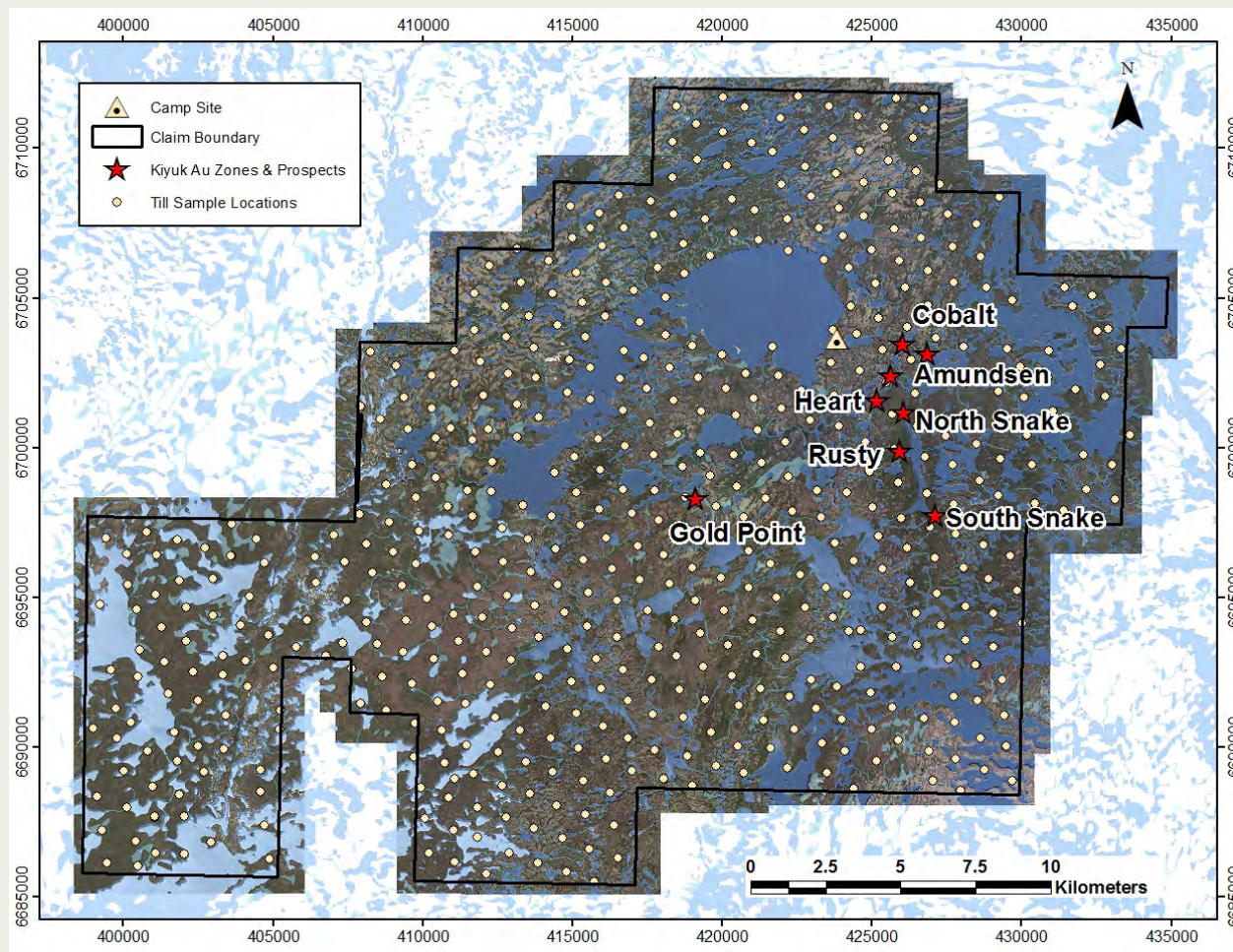
Gold values in surface samples and air mag



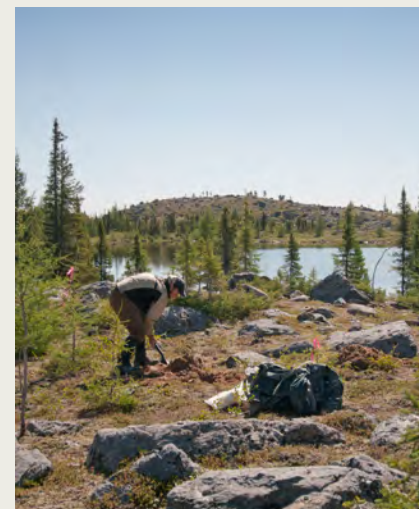
PPG Technical Team

- Previous prospecting and mapping had not covered the entire property.
- Notwithstanding early prospecting had found a lot of mineralized boulders.

➤ SUMMER 2012 EXPLORATION, TILL SAMPLING

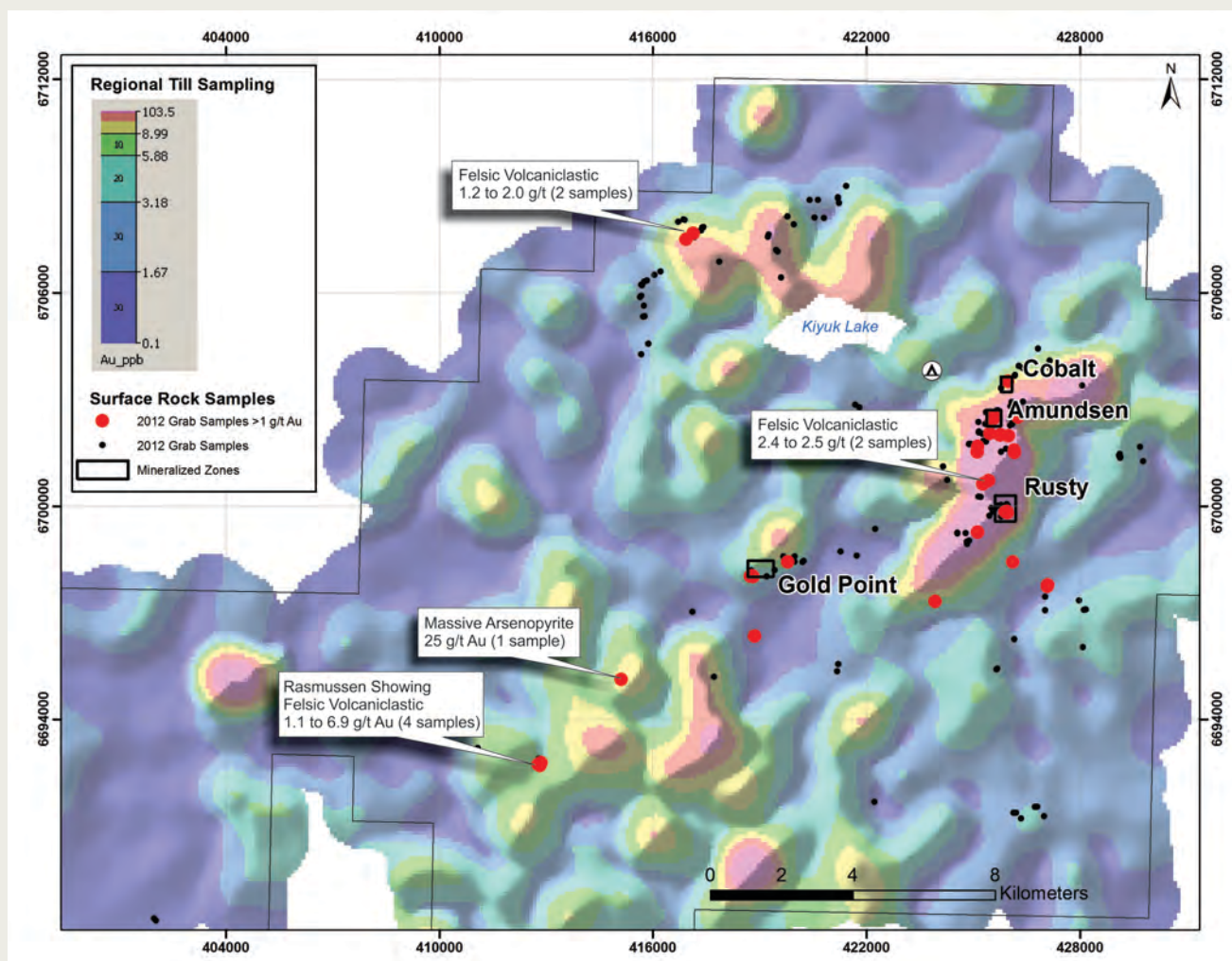


- The 558 till samples is the first property wide geochemical program undertaken.



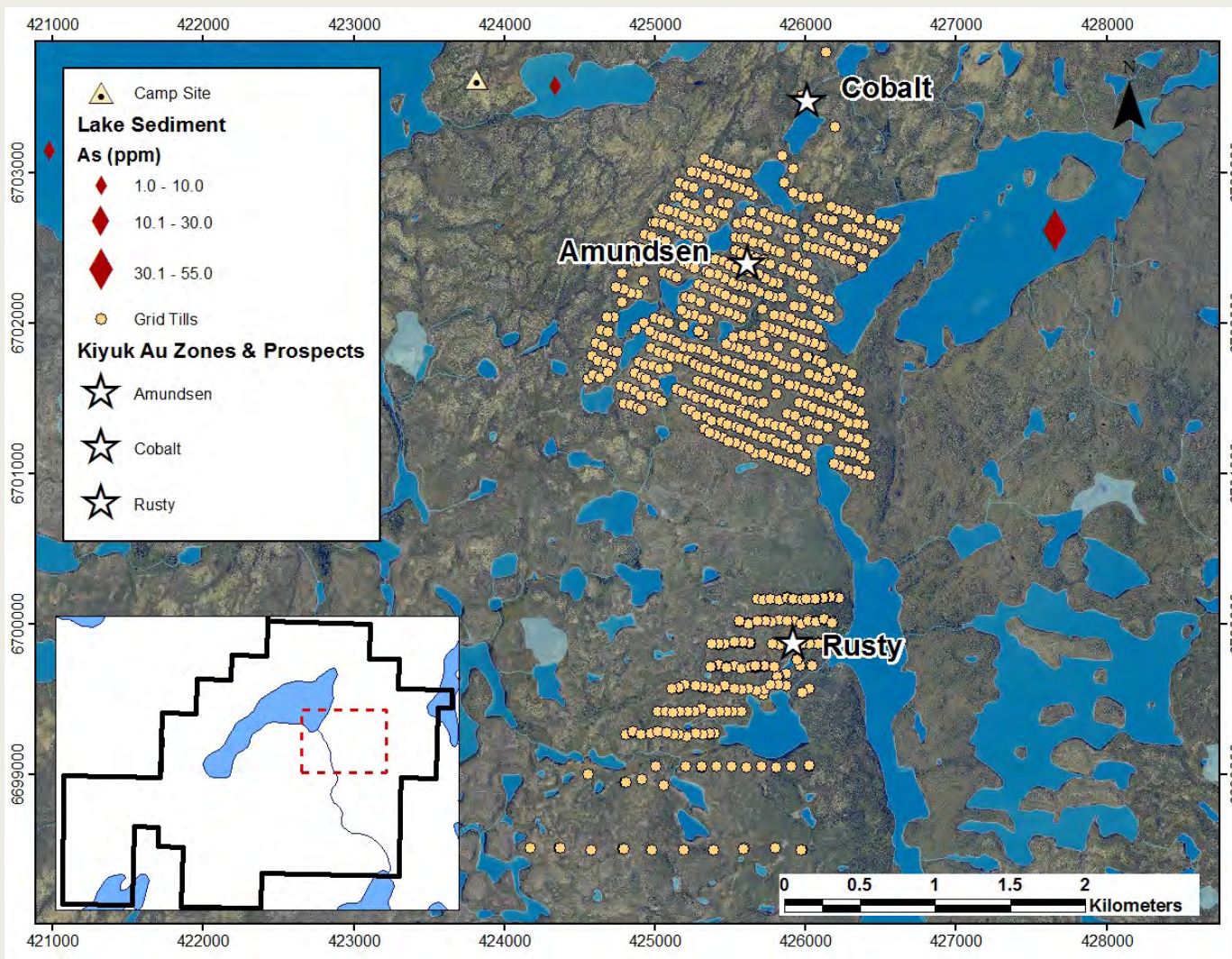
Till Sampling

➤ PROPERTY WIDE SAMPLING RESULTS, Au



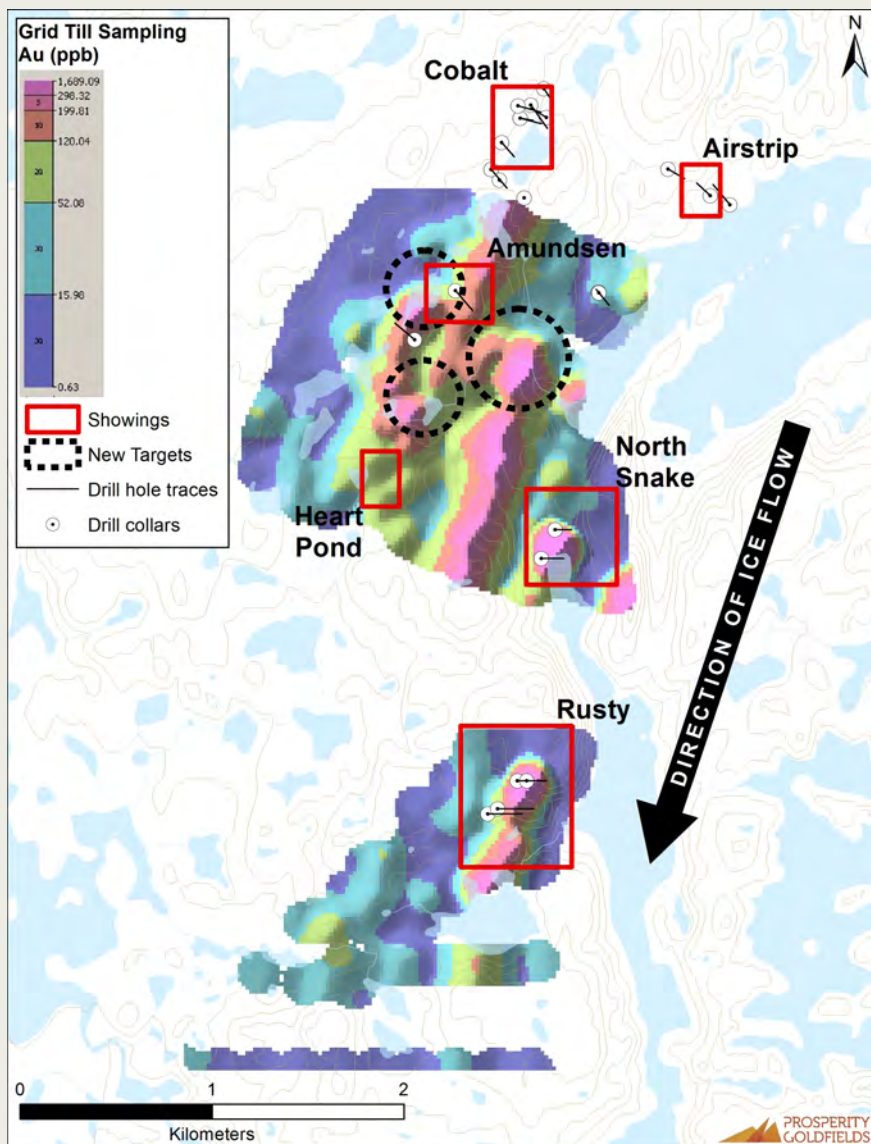
- Rasmussen is a new drill ready target.
- Property wide till sampling identified other areas warranting follow up.
- Prospecting/Mapping returned samples up to 25 g/t Au.

➤ SUMMER PROGRAM, GRID GEOCHEMISTRY



- Two grids, Rusty and Amundsen
- 100 x 50 m sampling

➤ GRID SAMPLING RESULTS, AU

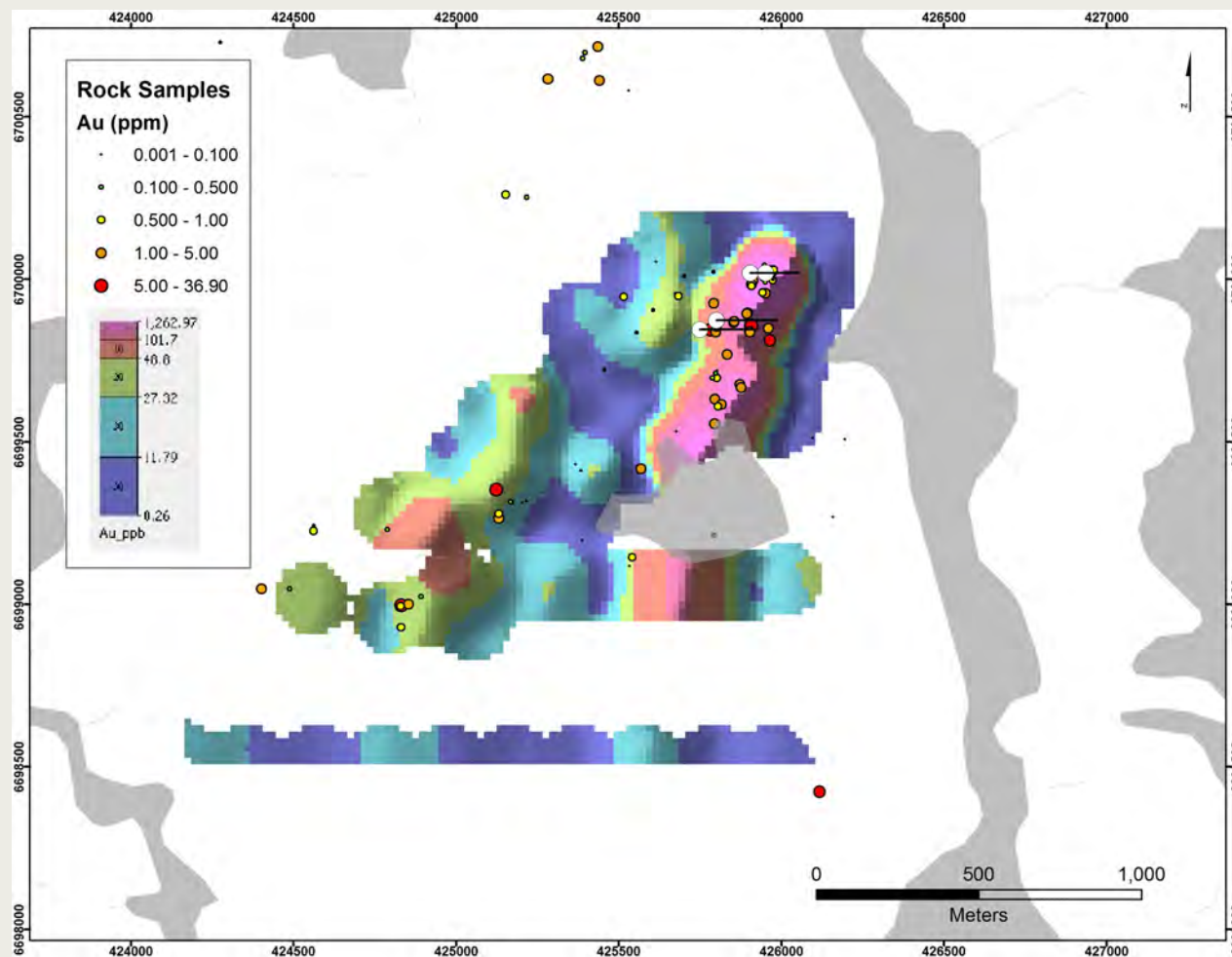


- Three new targets identified by grid till sampling.
- These new targets in the core prospective area.



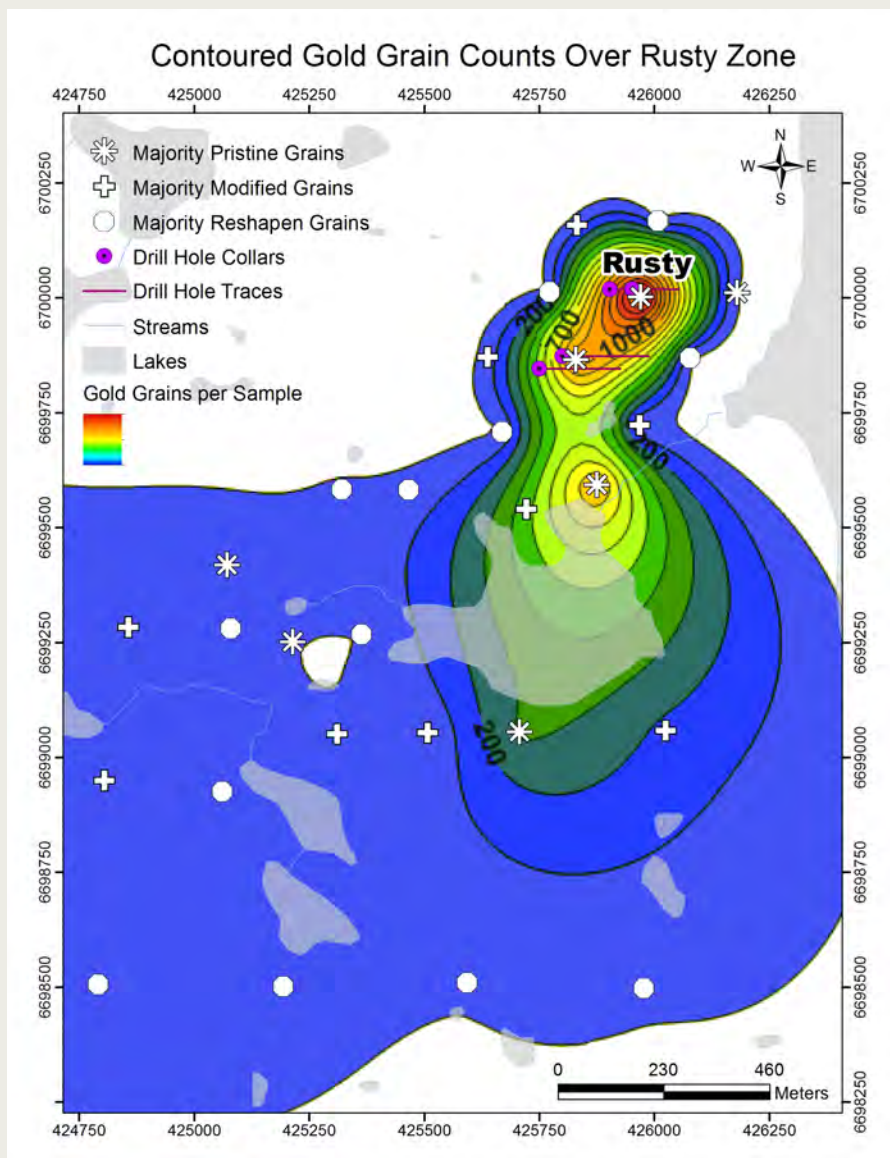
Samples ready for shipment

➤ RUSTY GRID SAMPLING RESULTS, AU

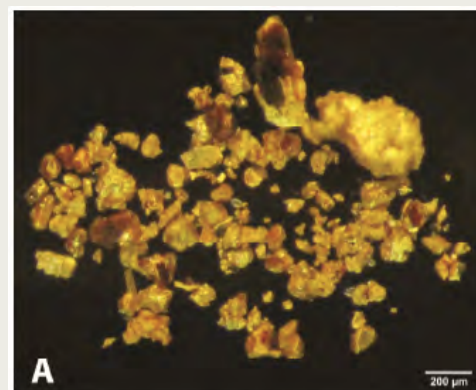


- Sampling confirmed the magnitude of Rusty Zone making it a priority target for 2013 drilling.
- The summer work revealed satellite targets needing further investigation

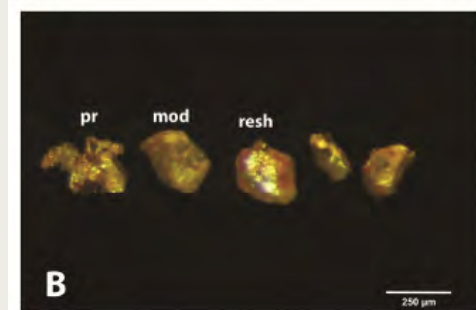
➤ RUSTY GOLD GRAIN ANALYSIS



- Abundant pristine gold grains, total of 926, in a sample 400 m down ice from drilling indicates south-ward extension to identified mineralisation.
- Pristine gold grains one kilometer further down ice suggest additional mineralisation at Rusty.

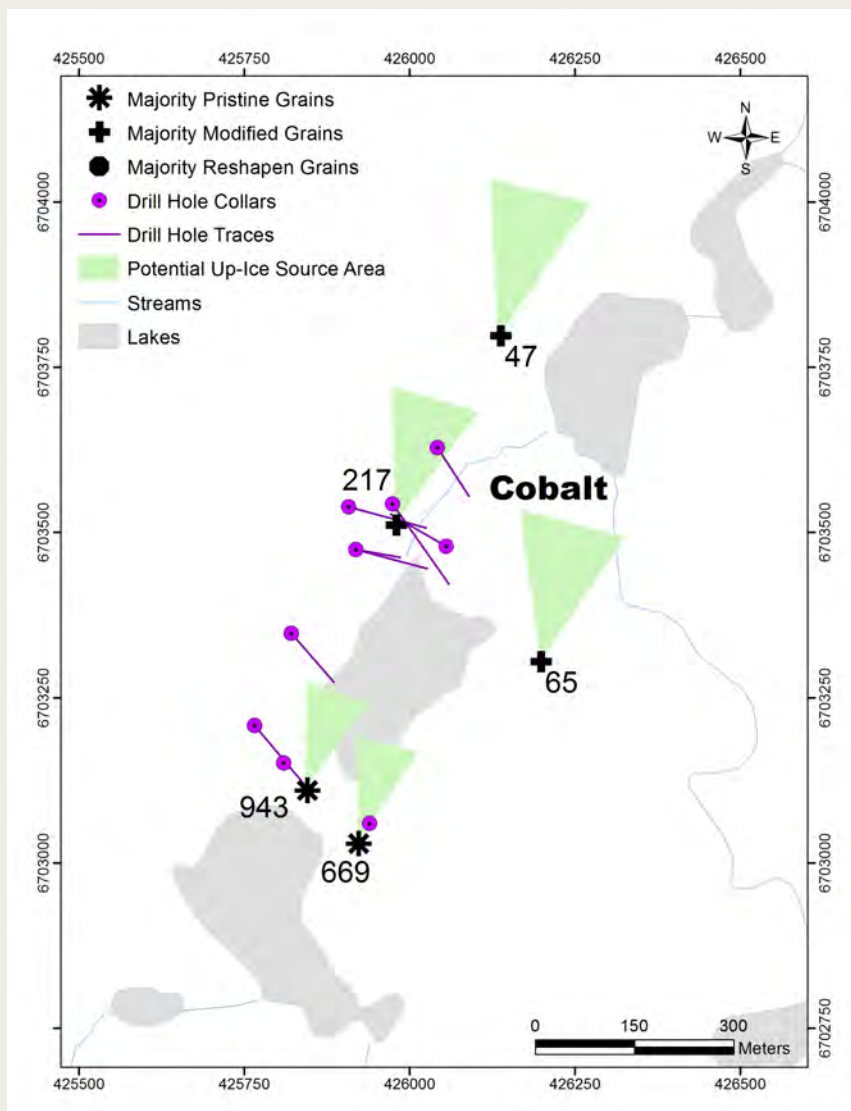


A Gold grains from sample at Rusty. Note predominance of grains with angular edges (pristine).



B Gold grain shape definitions; Pristine, Modified & Reshaped.

➤ COBALT GOLD GRAIN ANALYSIS



- Abundant pristine and modified gold grains suggest proximal hard rock mineralisation not discovered by previous drilling.



Boulder field at Cobalt Target with abundant gold mineralised clasts. Inset is a photo of a frost boil which was sampled and produced 943 gold grains.

➤ KIYUK 2012 ACHIEVEMENTS

- ✓ Rusty target is the priority for aggressive drilling and resource definition.
- ✓ Fourth drill discovery at Amundsen.
- ✓ The Property contains multiple gold showings.
- ✓ Kiyuk has the hallmarks of a new Gold Camp.



Planning field work

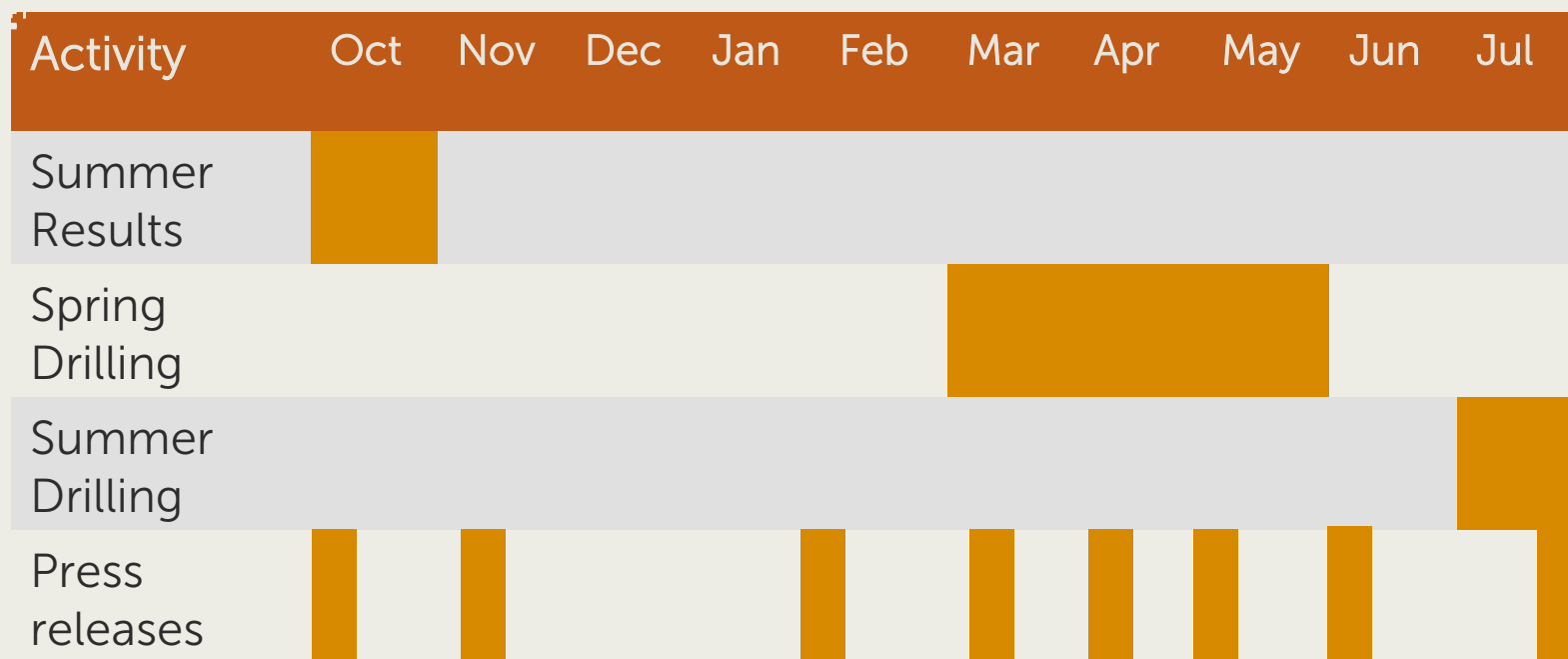


Samples off to the laboratory



PPG uses the best and latest tools

➤ EXPLORATION/NEWS SCHEDULE



- Objective is to define gold resources.
- Aggressive drilling Spring 2013 to grow the Rusty Zone & test other targets.
- Year round news flow.

➤ POISED TO DEFINE SUBSTANTIAL GOLD RESOURCES

- The best new gold discovery in Nunavut.
- Aggressive exploration approach.
- Technical and management team lead by veteran geologists Adrian Fleming and Quinton Hennigh.



Kiyuk Camp



Drilling



Camp Support

> CONTACT INFORMATION

INVESTOR RELATIONS Dwane Brosseau

Leo Karabelis

OFFICE 604 662 3380

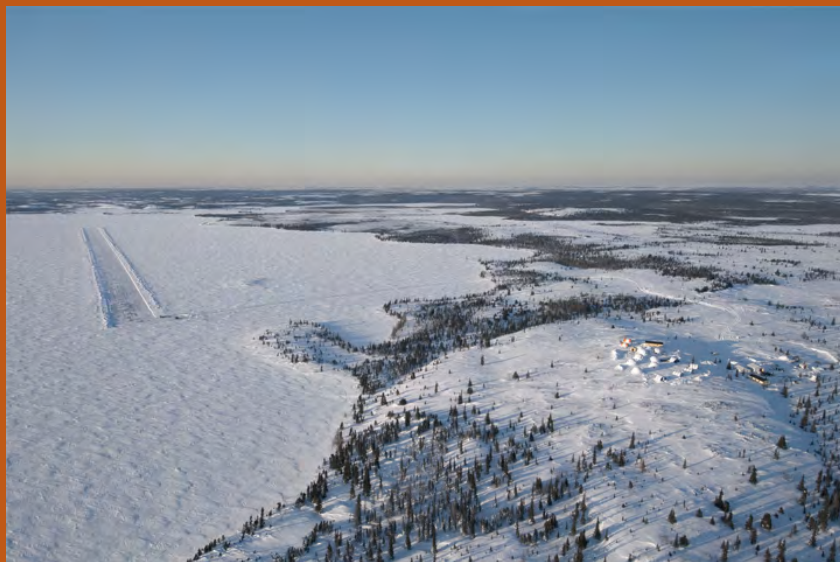
416 543 3120

TOLL FREE 1 855 237 6274

leo@frontlineir.com

WEB www.prosperitygoldfields.com

EMAIL info@prosperitygoldfields.com



Kiyuk Lake and Camp, Winter



2012 Summer Exploration, Nunavut

> Appendix - Best Drill Intercepts

PPG 2011 & 2012 Core Drill Hole Composites as Calculated using Target

Hole ID	Zone	DH_From (m)	DH_To (m)	Intercept Length	m * g
GP11-003	Gold Point	148.53	160.63	12.1m @ 6.37 g/t Au	77
GP11-003	Gold Point	164.84	191.38	26.5m @ 3.17 g/t Au	84
RU11-001	Rusty	2.44	40.23	37.8m @ 4.18 g/t Au	158
KI12-003	Rusty	19.48	39.00	19.5m @ 3.49 g/t Au	68
KI12-003	Rusty	108.00	118.50	10.5m @ 7.17 g/t Au	75
KI12-003	Rusty	159.00	220.50	61.5m @ 3.34 g/t Au	205

Criteria

>1 g/t composite average

At least 6m width

0.5 g/t cut off

Internal dilution of 0.1 g/t over 3m width